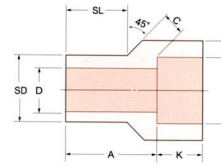
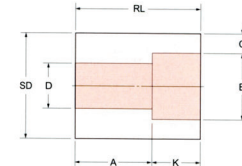


## Reducer Insert

3000# 6000#



**Type. 1**



**Type. 2<sup>1)</sup>**

(Unit : mm)

MSS SP-79

Nominal Pipe Size	Type <sup>2)</sup>		Socket Min		Shank Dia SD	Laying Length A	
	3M	6M	Dia B	Depth k		A	
						3M	6M
3/8 X 1/4	1	1	14.35	9.65	17.15	19	21
1/2 X 3/8	1	1	17.78	9.65	21.34	21	23
X 1/4	1	1	14.35	9.65	21.34	21	21
3/4 X 1/2	1	1	21.97	9.65	26.67	22	25
X 3/8	2	1	17.78	9.65	26.67	16	22
X 1/4	2	2	14.35	9.65	26.67	18	22
1 X 3/4	1	1	27.31	12.70	33.40	24	28
X 1/2	2	1	21.97	9.65	33.40	16	28
X 3/8	2	2	17.78	9.65	33.40	18	22
X 1/4	2	2	14.35	9.65	33.40	19	24
1 1/4 X 1	1	1	34.04	12.70	42.16	25	30
X 3/4	2	2	27.31	12.70	42.16	18	21
X 1/2	2	2	21.97	9.65	42.16	19	22
X 3/8	2	2	17.78	9.65	42.16	21	24
X 1/4	2	2	14.35	9.65	42.16	22	25
1 1/2 X 1 1/4	1	1	42.80	12.70	48.26	28	35
X 1	2	2	34.04	12.70	48.26	18	29
X 3/4	2	2	27.31	12.70	48.26	19	25
X 1/2	2	2	21.97	9.65	48.26	21	27
X 3/8	2	2	17.78	9.65	48.26	22	28

- At the option of the manufacturer Type 2 Reducers may be furnished in Type 1 configuration.
- 3M and 6M symbols denote 3000 and 6000 classes.

Bore D		Wall Thickness Min C		Length Min.			
3M	6M	3M	6M	SL		RL	
				3M	6M	3M	6M
9.0	6.5	3.78	4.60	14	16	-	-
12.5	9.0	4.01	5.03	16	16	-	-
9.0	6.0	3.78	4.60	16	16	-	-
16.0	11.5	4.67	5.93	17	19	-	-
12.5	9.0	4.01	5.03	-	19	27	-
9.0	6.5	3.78	4.60	-	-	27	32
21.0	15.5	4.90	6.96	19	21	-	-
16.0	11.5	4.67	5.97	-	21	28.5	-
12.5	9.0	4.01	5.03	-	-	28.5	33
9.0	6.0	3.78	4.60	-	-	28.5	33
26.5	20.5	5.69	7.92	21	22	-	-
21.0	15.5	4.90	6.96	-	-	32	35
16.0	11.5	4.67	5.97	-	-	32	35
12.5	9.0	4.01	5.03	-	-	32	35
9.0	6.0	3.78	4.60	-	-	32	35
35.0	29.5	6.07	7.92	22	25	-	-
26.5	20.5	5.69	7.92	-	25	33	-
21.0	15.5	4.90	6.96	-	-	33	40
16.0	11.5	4.67	5.97	-	-	33	40
12.5	9.0	4.01	5.03	-	-	33	40

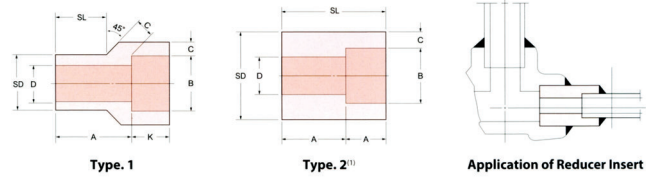
- ※ Laying Length A - Sizes 3/8\* thru 3/4\* ±1.50mm  
 Sizes 1\* thru 2\* ±2.00mm  
 Sizes 2 1/2\* thru 4\* ±2.50mm
- ※ Laying Length B - Sizes 3/8\* thru 2\* ±0.13mm  
 Sizes 2 1/2\* thru 4\* ±2.50mm

**TOLERANCES**

- ※ Bore D - Sizes 3/8\* thru 3/4\* ±0.8mm
- ※ Socket Dia SD - Sizes 2 1/2\* thru 4\* ±0.25mm  
 Sizes 1/4\* thru 1 1/2\* ±0.25mm  
 Sizes 2\* thru 3\* ±0.75mm  
 Sizes 4\* ±0.25mm
- ※ Shank Length SL - Sizes 3/8\* thru 3/4\* -1.5mm  
 Sizes 1\* thru 2\* -2.0mm  
 Sizes 2 1/2\* thru 4\* -2.5mm

## Reducer Insert

3000# 6000#



MSS SP-79

Nominal Pipe Size	Type <sup>[2]</sup>		Socket Min		Shank Dia SD	Laying Length A	
	3M	6M	Dia B	Depth k		A	
						3M	6M
2 X 1 1/2	1	1	48.90	12.70	60.33	32	39
X 1 1/4	2	2	42.80	12.70	60.33	21	24
X 1	2	2	34.04	12.70	60.33	22	25
X 3/4	2	2	27.31	12.70	60.33	24	27
X 1/2	2	2	21.97	9.65	60.33	25	28
2 1/2 X 2	1	1	61.37	15.75	73.03	46	43
X 1 1/2	2	2	48.90	12.70	73.03	35	35
X 1 1/4	2	2	42.80	12.70	73.03	37	37
X 1	2	2	34.04	12.70	73.03	38	38
X 3/4	2	2	27.31	12.70	73.03	40	38
3 X 2 1/2	1	1	74.07	15.75	88.90	38	57
X 2	2	2	61.37	15.75	88.90	25	32
X 1 1/2	2	2	48.90	12.70	88.90	29	32
X 1 1/4	2	2	42.80	12.70	88.90	30	32
X 1	2	2	34.04	12.70	88.90	32	32
4 X 3	2	1	90.04	15.75	114.30	33	-
X 2 1/2	2	2	74.07	15.75	114.30	38	-
X 2	2	2	61.37	15.75	114.30	38	-
X 1 1/2	2	2	48.90	12.70	114.30	42	-
X 1 1/4	2	2	42.80	12.70	114.30	43	-

- At the option of the manufacturer Type 2 Reducers may be furnished in Type 1 configuration.
- 3M and 6M symbols denote 3000 and 6000 classes.

(Unit : mm)

Bore D		Wall Thickness Min C		Length Min.			
3M	6M	3M	6M	SL		RL	
				3M	6M	3M	6M
41.0	34.0	6.35	8.92	25	28	-	-
35.0	29.5	6.07	7.92	-	-	38	41
26.5	20.5	5.69	7.92	-	-	38	41
21.0	15.5	4.90	6.96	-	-	38	41
16.0	11.5	4.67	5.97	-	-	38	41
52.5	43.0	6.93	10.92	38	32	-	-
41.0	34.0	6.35	8.92	-	-	54	54
35.0	29.5	6.07	7.92	-	-	54	54
26.5	20.5	5.69	7.92	-	-	54	54
21.0	15.5	4.90	6.96	-	-	54	54
62.5	54.0	8.76	11.91	32	-	-	-
52.5	43.0	6.93	10.92	-	-	48	54
41.0	34.0	6.35	8.92	-	-	48	54
35.0	29.5	6.07	7.92	-	-	48	54
26.5	20.5	5.69	7.92	-	-	48	54
78.0	-	9.53	-	-	-	60	-
62.5	-	8.76	-	-	-	60	-
52.5	-	6.93	-	-	-	60	-
41.0	-	6.35	-	-	-	60	-
35.0	-	6.07	-	-	-	60	-

- ※ Laying Length A - Sizes 3/8" thru 3/4" ±1.50mm  
 Sizes 1" thru 2" ±2.00mm  
 Sizes 2 1/2" thru 4" ±2.50mm
- ※ Laying Length B - Sizes 3/8" thru 2" ±0.13mm  
 Sizes 2 1/2" thru 4" ±2.50mm

### TOLERANCES

- ※ Bore D - Sizes 3/8" thru 3/4" ±0.8mm
- ※ Socket Dia SD - Sizes 2 1/2" thru 4" ±0.25mm  
 Sizes 1/4" thru 1 1/2" ±0.25mm  
 Sizes 2" thru 3" ±0.75mm  
 Sizes 4" ±0.25mm
- ※ Shank Length SL - Sizes 3/8" thru 3/4" -1.5mm  
 Sizes 1" thru 2" -2.0mm  
 Sizes 2 1/2" thru 4" -2.5mm